

IDEAL Version: ID12_0C_01

IDF

RAB
ADN

id12_0c_01
id12_0c_01

MWD_10

id12_0c_01

Format: GeoVISION Service Log

Vertical Scale: 1:200

Graphics File Created: 16-Feb-2007 16:39

PIP SUMMARY

Density Samples †

Neutron Samples †

† Gamma Ray Samples

† Ring Samples

Rate of Penetration, Averaged over Last
5ft (ROP5_RM)
200 (M/HR) 0

RAB Gamma Ray (GR_RAB)
0 (GAPI) 200

Vertical Hole Diameter (VERD)
6 (IN) 16

Horizontal Hole Diameter (HORD)
6 (IN) 16

Density Time After Bit (TAB_DEN)
0 (HR) 10

RAB
Rotational
Speed
(RPM_RAB)
(RPM)
250 0

ADN
Rotational
Speed
(RPM_ADN)
(RPM)
0 250

Ring Resistivity (RES_RING)
0.2 (OHMM) 2000

Shallow Button Resistivity (RES_BS)
0.2 (OHMM) 2000

Medium Button Resistivity (RES_BM)
0.2 (OHMM) 2000

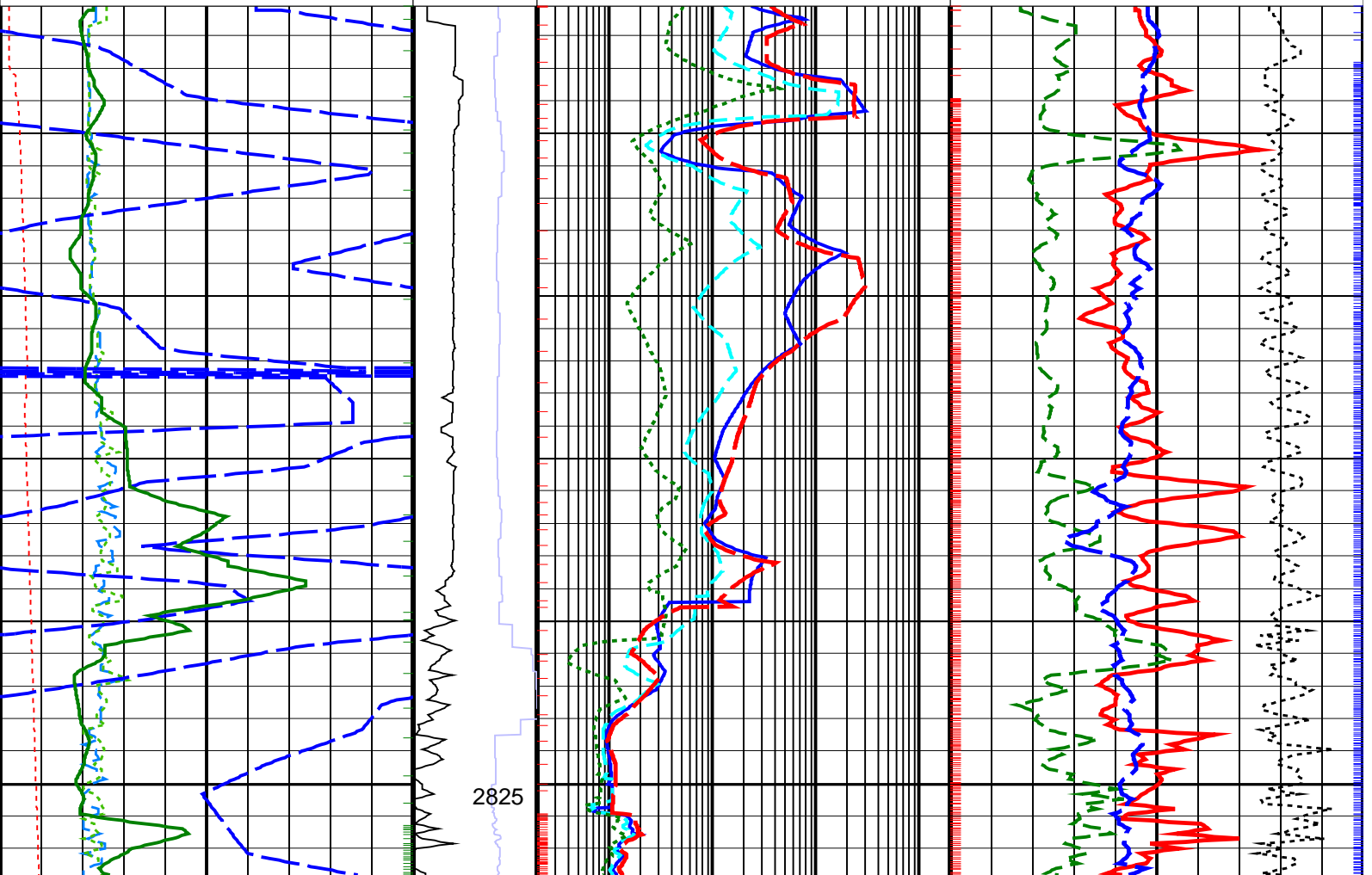
Deep Button Resistivity (RES_BD)
0.2 (OHMM) 2000

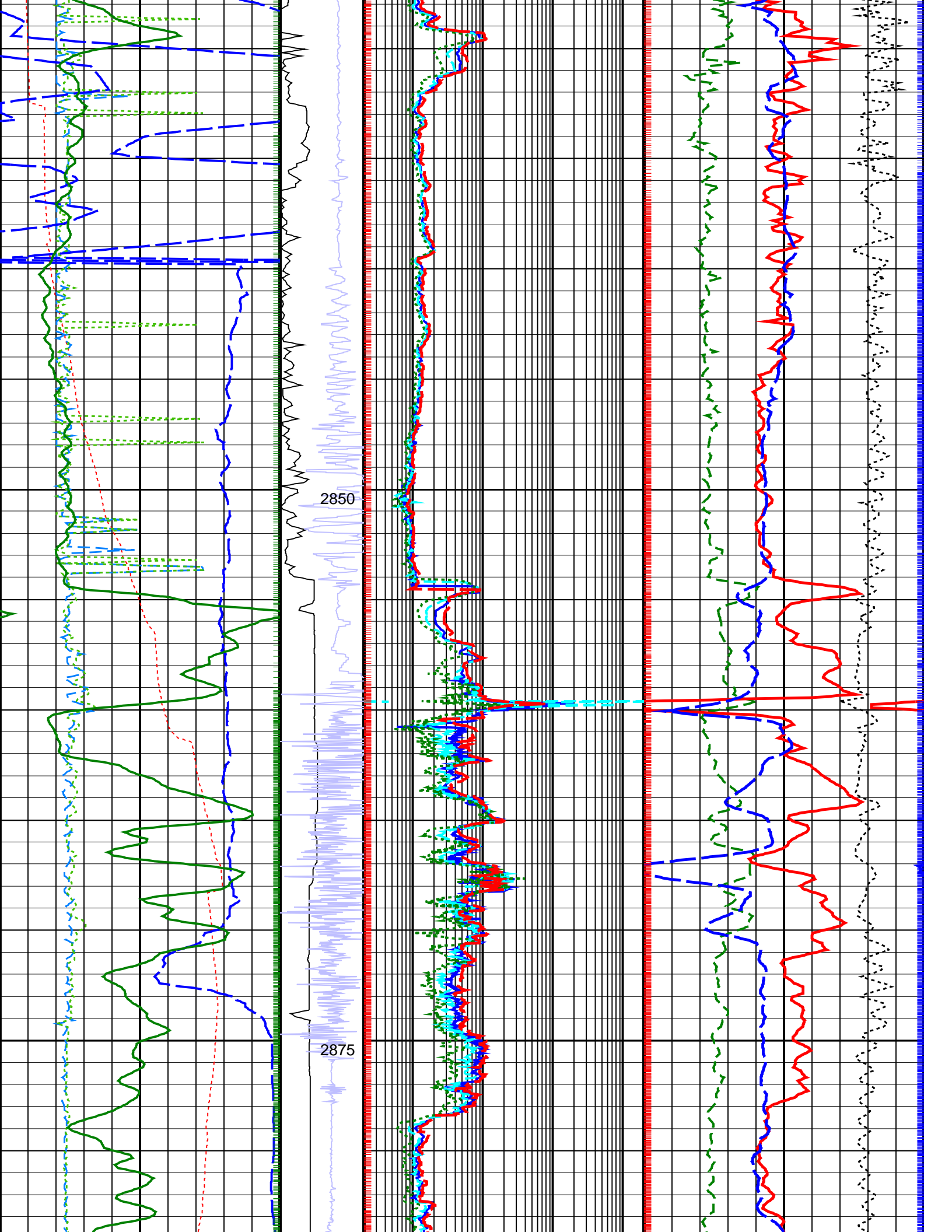
Thermal Neutron Porosity (TNPH)
45 (PU) -15

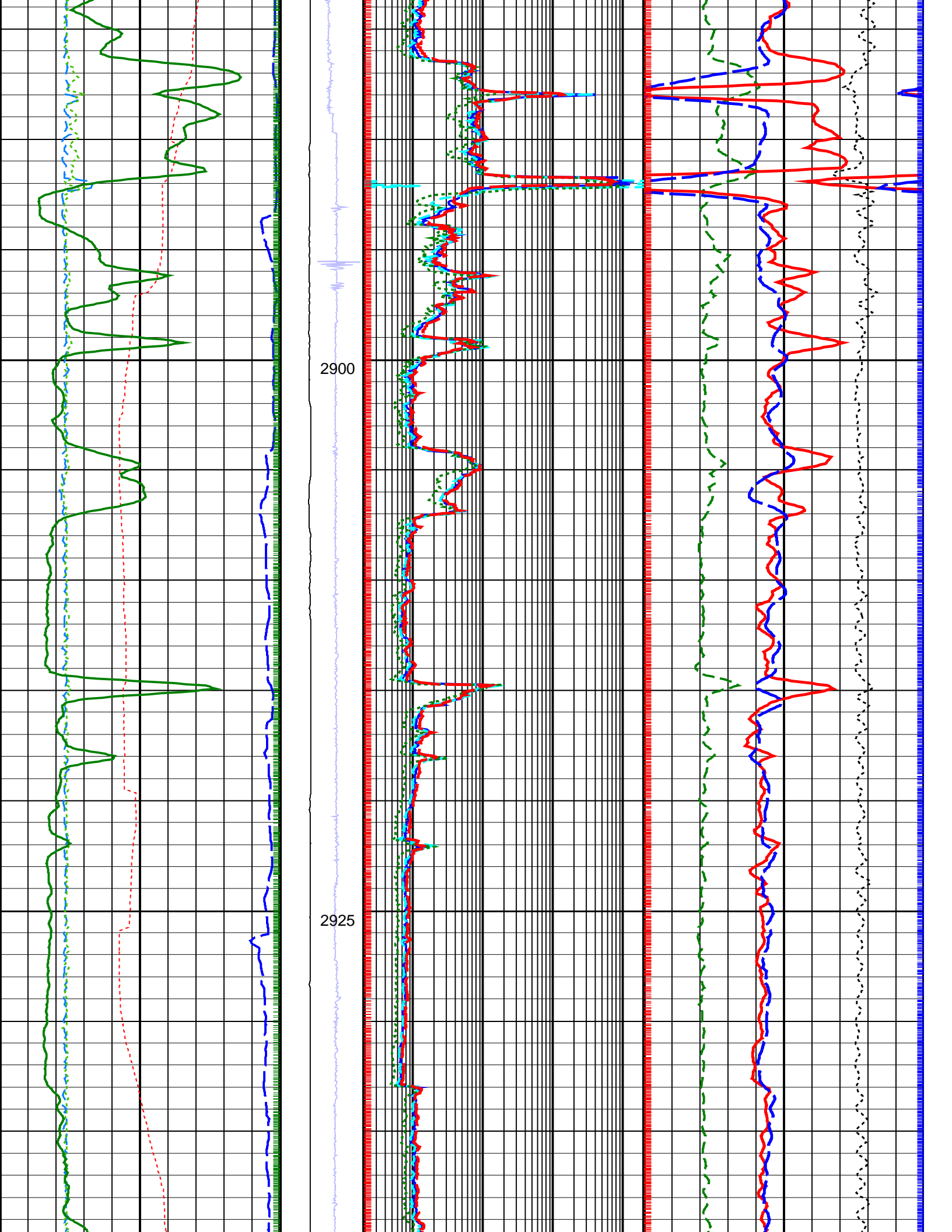
Bulk Density, Bottom (ROBB)
1.85 (G/C3) 2.85

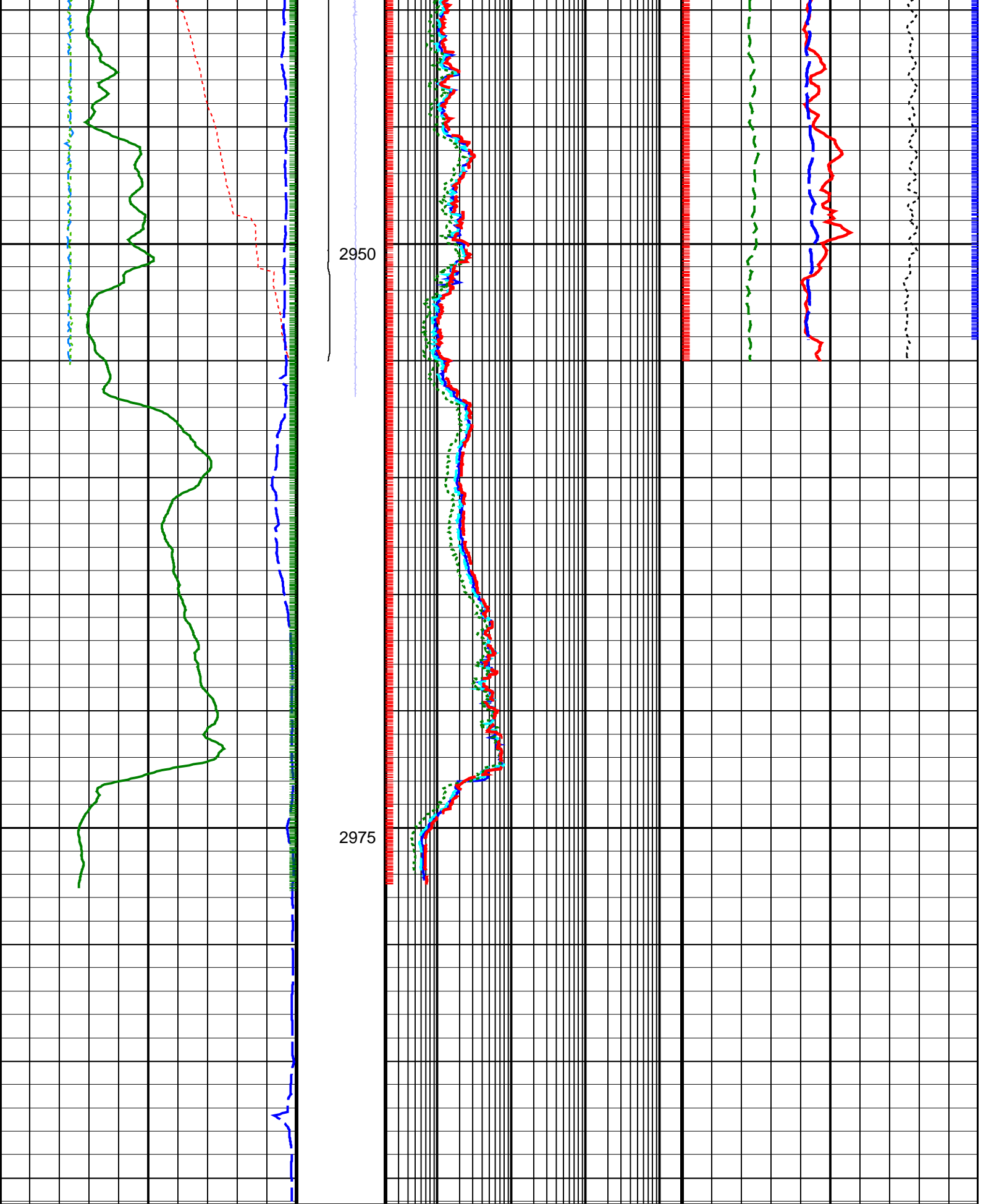
Photoelectric Factor, Bottom (PEB)
0 (----) 10

Bulk Density Correction, Bottom
(DRHB)
-0.75 (G/C3) 0.25









2950

2975



| | | | |
|--|---|---|--|
| <u>Horizontal Hole Diameter (HORD)</u> 6 (IN) 16 | RAB Rotational Speed (RPM_RAB) (RPM) 250 0 | <u>Medium Button Resistivity (RES_BM)</u> 0.2 (OHMM) 2000 | <u>Photoelectric Factor, Bottom (PEB)</u> 0 (----) 10 |
| <u>Vertical Hole Diameter (VERD)</u> 6 (IN) 16 | | <u>Shallow Button Resistivity (RES_BS)</u> 0.2 (OHMM) 2000 | <u>Bulk Density, Bottom (ROBB)</u> 1.85 (G/C3) 2.85 |
| <u>RAB Gamma Ray (GR_RAB)</u> 0 (GAPI) 200 | | <u>Ring Resistivity (RES_RING)</u> 0.2 (OHMM) 2000 | <u>Thermal Neutron Porosity (TNPH)</u> 45 (PU) -15 |
| <u>Rate of Penetration, Averaged over Last 5ft (ROP5_RM)</u> 200 (M/HR) 0 | | | |

PIP SUMMARY

Density Samples †

Neutron Samples †

‡ Gamma Ray Samples

† Ring Samples

IDEAL Version: ID12_0C_01

IDF

| | | | |
|-----|------------|--------|------------|
| RAB | id12_0c_01 | MWD_10 | id12_0c_01 |
| ADN | id12_0c_01 | | |